

Hudson Street Redesign

2023 Downtown Achievement
Awards Application

**HUDSON
SQUARE
CARE**

Hudson Square
Business Improvement
District

Photo by Elizabeth Felicella



Project Overview

The Hudson Street renovation balances pedestrian, bicycle, and vehicular needs along 7 blocks of one of Hudson Square's primary arteries, while creating a grand boulevard that reinforces the distinctive character of the neighborhood. The redesign was the first design-build infrastructure project in NYC and was implemented by a private public partnership.

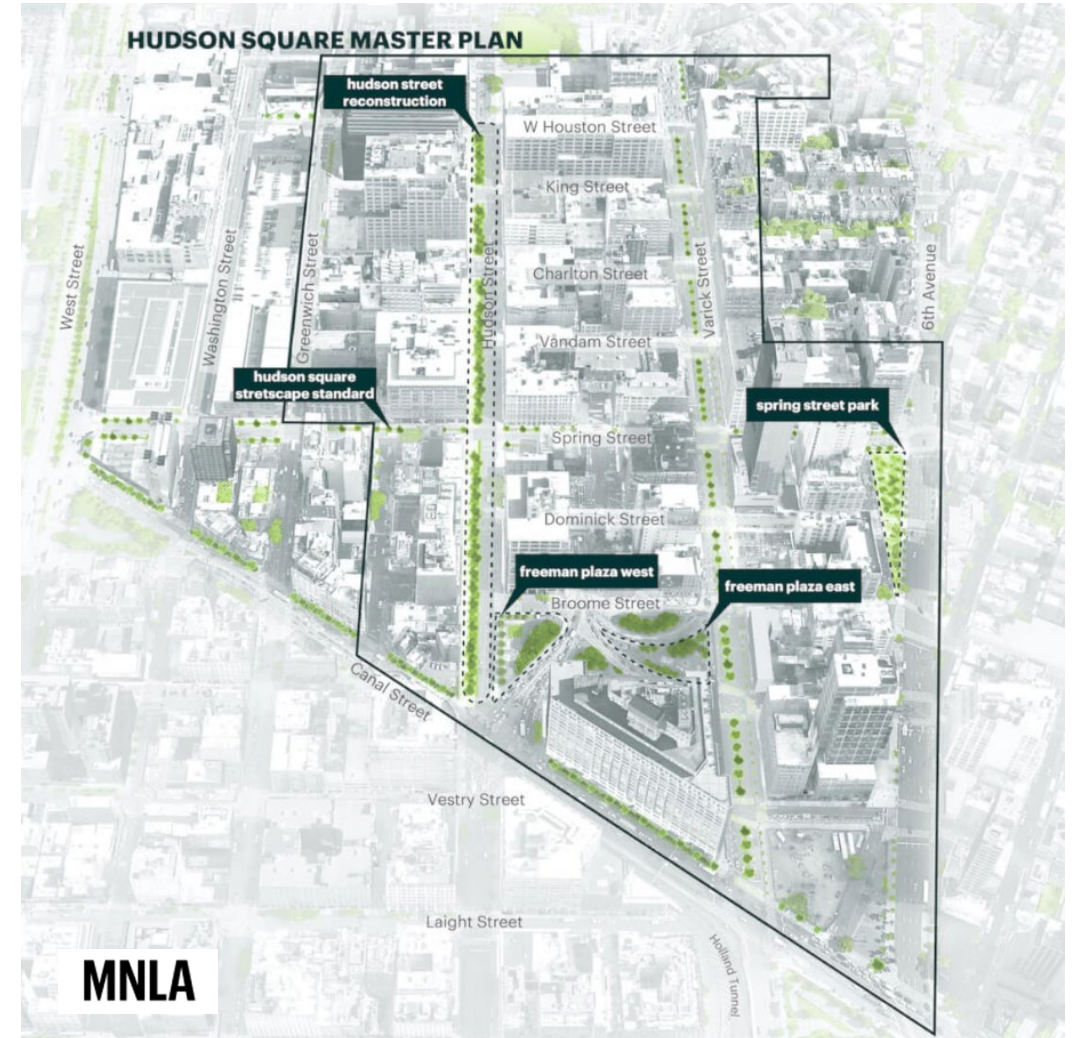
Key Design Elements:

- 8,000+ square feet of newly planted areas filled with various trees, shrubs, and perennials
- New, modern benches providing approximately 170 additional seats
- 2,000+ square feet of sidewalk cafe space
- 20 new bike parking spaces
- Dedicated and parking-protected bike lane

Partners:



Hudson Square
Business Improvement
District



Project Timeline

February 2018 – March 2019

Design-Build Team Procurement

January 2017 – January 2018

Preliminary Design

- Community Board Presentation
- Stakeholder Design Workshop
- Individual Outreach (e.g. retailers, property managers)
- HSBID Traffic and Streetscape Task Force Review
- Public Design Commission Preliminary Approval



April 2019 – December 2019

Final Design

- Community Board Presentation
- HSBID Traffic and Streetscape Task Force Review
- Public Design Commission Final Approval

January 2020 – June 2022

Construction

- Newsletters
- Informational Fence Wraps
- Coordination Meetings with Property Owners and Developers

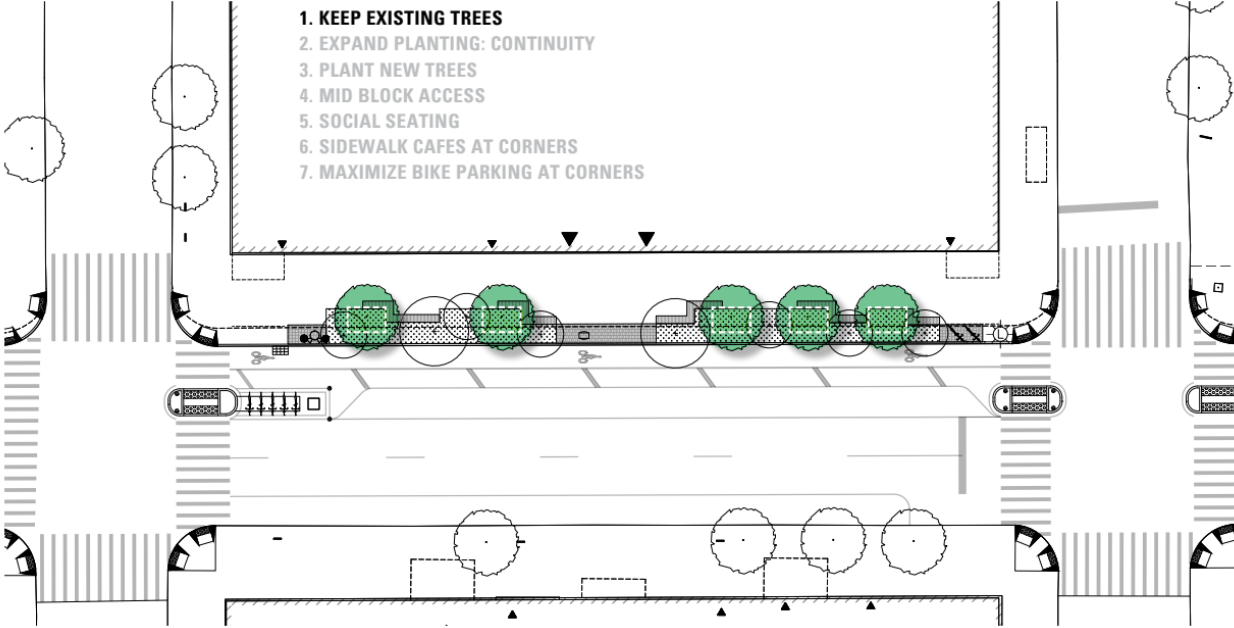


July 2022

Ribbon Cutting

Design Principles

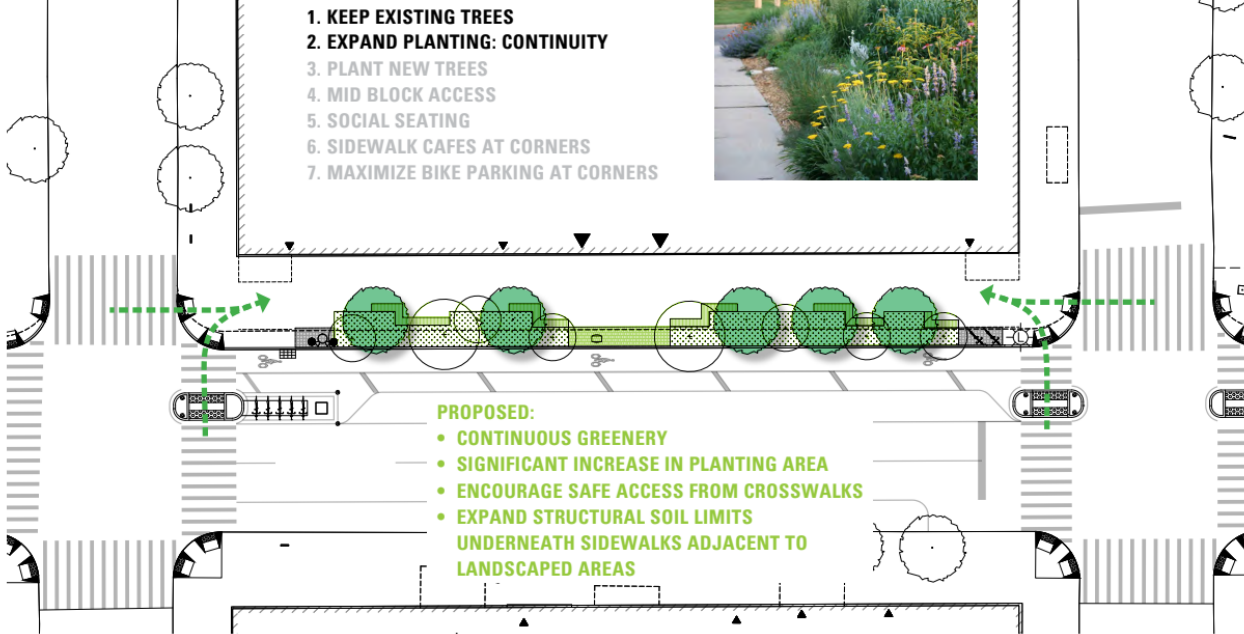
1. KEEP EXISTING TREES
2. EXPAND PLANTING: CONTINUITY
3. PLANT NEW TREES
4. MID BLOCK ACCESS
5. SOCIAL SEATING
6. SIDEWALK CAFES AT CORNERS
7. MAXIMIZE BIKE PARKING AT CORNERS



1. KEEP EXISTING TREES
2. EXPAND PLANTING: CONTINUITY
3. PLANT NEW TREES
4. MID BLOCK ACCESS
5. SOCIAL SEATING
6. SIDEWALK CAFES AT CORNERS
7. MAXIMIZE BIKE PARKING AT CORNERS



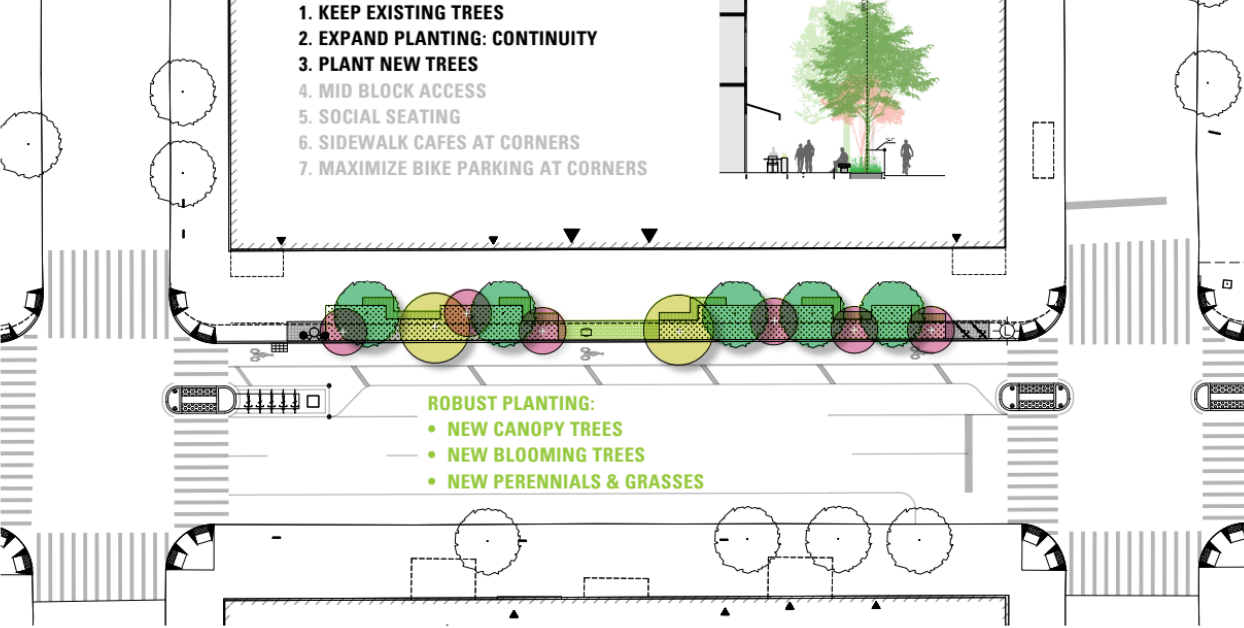
- PROPOSED:**
- CONTINUOUS GREENERY
 - SIGNIFICANT INCREASE IN PLANTING AREA
 - ENCOURAGE SAFE ACCESS FROM CROSSWALKS
 - EXPAND STRUCTURAL SOIL LIMITS UNDERNEATH SIDEWALKS ADJACENT TO LANDSCAPED AREAS



1. KEEP EXISTING TREES
2. EXPAND PLANTING: CONTINUITY
3. PLANT NEW TREES
4. MID BLOCK ACCESS
5. SOCIAL SEATING
6. SIDEWALK CAFES AT CORNERS
7. MAXIMIZE BIKE PARKING AT CORNERS



- ROBUST PLANTING:**
- NEW CANOPY TREES
 - NEW BLOOMING TREES
 - NEW PERENNIALS & GRASSES



1. KEEP EXISTING TREES
2. EXPAND PLANTING: CONTINUITY
3. PLANT NEW TREES
4. MID BLOCK ACCESS
5. SOCIAL SEATING
6. SIDEWALK CAFES AT CORNERS
7. MAXIMIZE BIKE PARKING AT CORNERS



- LOBBY DROP OFF
- TRASH PICK UP
- STREET PARKING ACCESS

1. KEEP EXISTING TREES
2. EXPAND PLANTING: CONTINUITY
3. PLANT NEW TREES
4. MID BLOCK ACCESS
5. SOCIAL SEATING
6. SIDEWALK CAFES AT CORNERS
7. MAXIMIZE BIKE PARKING AT CORNERS



- 50% CLEAR PATH REQUIRED
- MINIMAL IMPACT ON PLANTING
- HIGH VISIBILITY + ACCESSIBILITY

1. KEEP EXISTING TREES
2. EXPAND PLANTING: CONTINUITY
3. PLANT NEW TREES
4. MID BLOCK ACCESS
5. SOCIAL SEATING
6. SIDEWALK CAFES AT CORNERS
7. MAXIMIZE BIKE PARKING AT CORNERS



- LARGE GATHERING SPACE
- SOCIAL SEATING

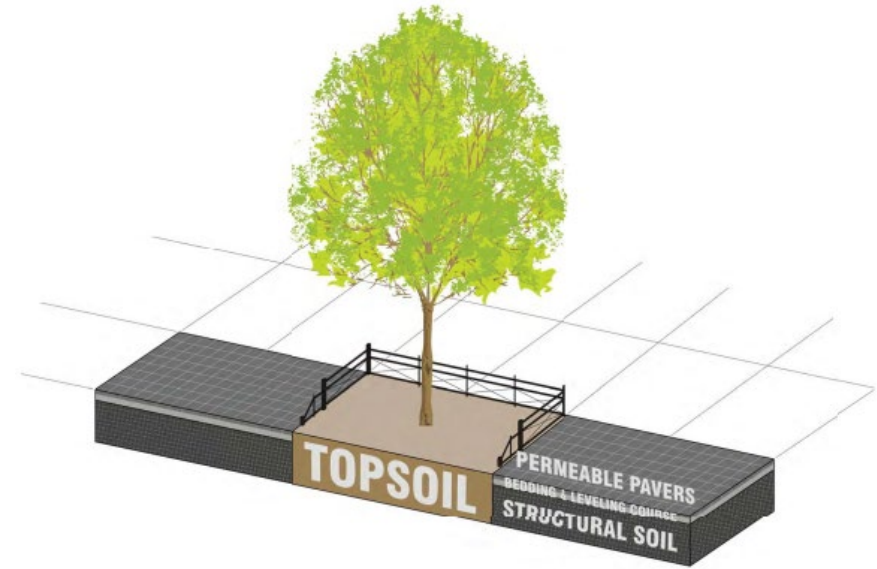
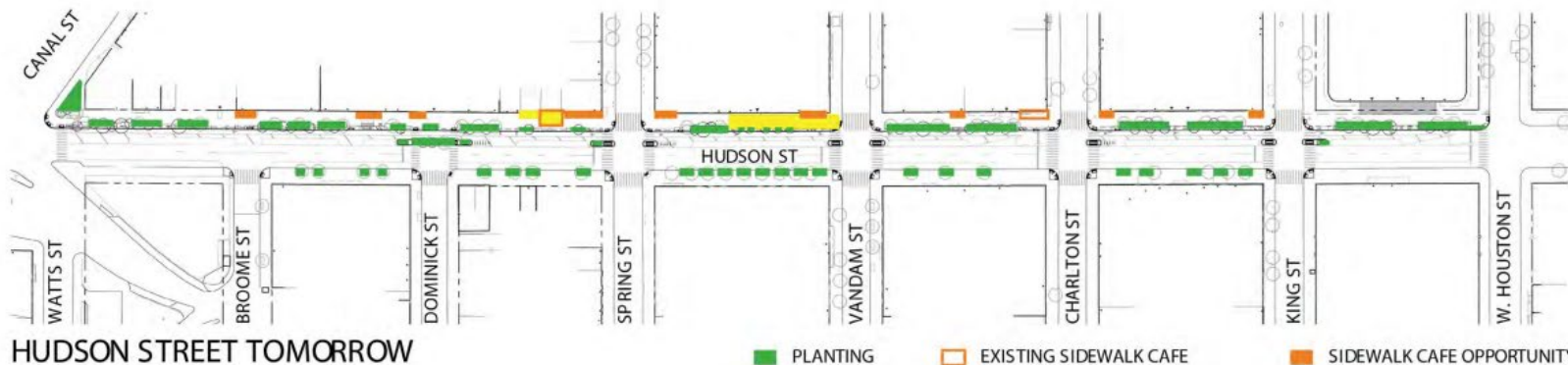
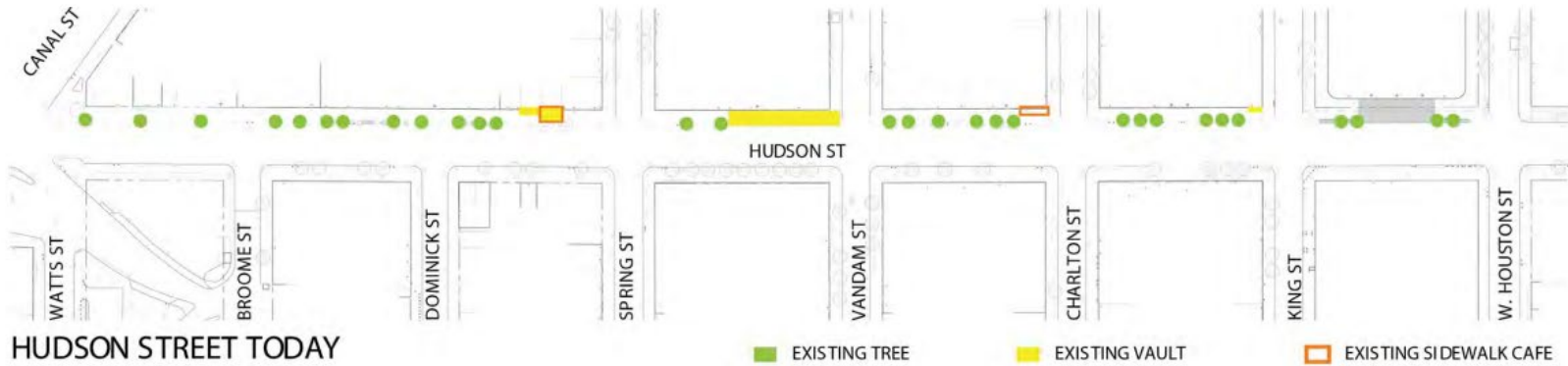
1. KEEP EXISTING TREES
2. EXPAND PLANTING: CONTINUITY
3. PLANT NEW TREES
4. MID BLOCK ACCESS
5. SOCIAL SEATING
6. SIDEWALK CAFES AT CORNERS
7. MAXIMIZE BIKE PARKING AT CORNERS



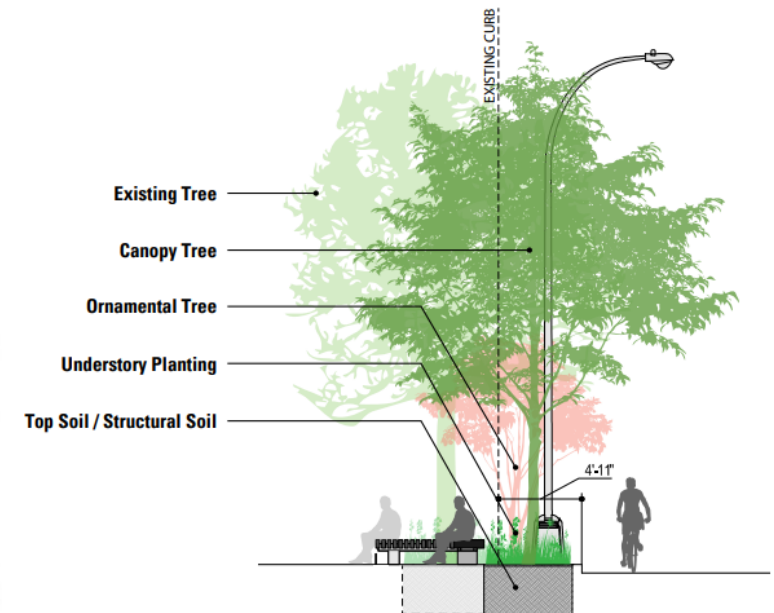
- BIKE CORRAL: HIGH CAPACITY
- ENCOURAGE SAFE ACCESS AT STREET CORNERS

Hudson Square Standard

The custom tree planting design applied along Hudson Street includes expanded tree pits flanked by permeable pavers and distinctive tree guards that create a cohesive neighborhood identity and help trees thrive in NYC's urban setting and local microclimate.



Hudson Square Standard
Continuous Tree Pit + Permeable Pavers



Hudson Street Vision



Image courtesy of Mathews Nielsen Landscape Architects, P.C. with attribution to W Architecture and Landscape Architecture, LLC



Image courtesy of Mathews Nielsen Landscape Architects, P.C

Construction



Block by block phased construction mitigated community impacts



Custom vinyl wrap that was installed on the construction fence

Before/After



Before/After







Photo by Elizabeth Felicella